



Great Dane Trailers

Section 4

Landing Gear & Attachments

Landing Gear Accessories



Part Number	Description	Size
44185	Standard Reinforced	10" X 10" X 4.38"
05-317	Double Gusset	10" X 12" X 4.38"
PNS05-318	Double Gusset	10" X 10" X 4.38"
PNS05-310	Low Profile	10" X 10" X 1.75"



Part Number	Description
GD0048	Cushion Foot Kit for GD60 10" X 10"
GD0066	Cushion Foot Kit for GD70 10" X 10"
GD0732	Cushion Foot Only for GD60 10" X 10"
GD1825	Cushion Foot Only for GD70 10" X 10"
GD0725	Steel Plate for GD60
GD1829	Steel Plate for GD70
GD0726	Rubber Cushion for GD60
GD1828	Rubber Cushion for GD70
GD0050-70	Bolt, .63" X 5.50" for GD60 & GD70
BINXB-SP0012-10	Nut, .63" for GD60 & GD70
HOLXA-V-1996-01	Self Leveling Shoe, Round (Holland)

Vertical Crank Handle



Part Number	Description
GD56879	Vertical 7.38"
GD56880	Vertical 11.00"
PNS03-215-V	Vertical 15.88"
PNS03-221-V	Vertical 21.00"
HOLXA-V-90-0	Vertical 9.12"
LG0083-02	Horizontal 5.50"
3-221	Horizontal 21.00"
GD0083-04	Horizontal 11.12"
PNS03-215-H	Horizontal 15.88"
41516MEPH	Horizontal 17.12"

Horizontal Crank Handle



Speed Crank



Part Number	Description
KYS112010-1	Horizontal 9" Crank Handle

Section 4 Landing Gear & Attachments

Landing Gear Accessories



Part Number	Description	Length
BINLG0094-64	Binkley Cross Drive Shaft	64.00"
BINLG0094-6825	Binkley Cross Drive Shaft	68.25"
BINLG0094-70	Binkley Cross Drive Shaft	70.00"
099-18902-01188	Binkley Cross Drive Shaft SuperSeal	74.25"
CS-4-536	Cross Drive Shaft Three Piece	37.00" - 56.00"
04-552	Cross Drive Shaft Three Piece	53.00" - 72.00"
JOSB10066.68.4	Jost Cross Drive Shaft	68.40"



BINRK-10980



BUF1306-KIT

GD0060



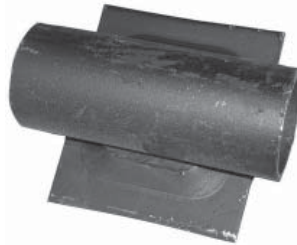
Wheel 9" Diameter

31970



Crank Handle Extension

PNS06-345



Axle Housing for Round Leg

BINLG0085



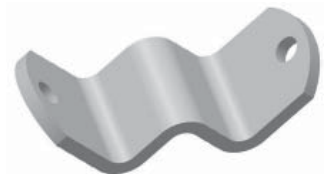
Crank Handle Hanger Hook

GD0070-02



Sand Shoe Axle 8.25"

BINLG0266
HOLXA-V-1938



Landing Gear Brace Attachment
(W-Bracket)